

Bulletin No. 7

**Be Kind  
Be Safe  
Be Your Best**



**PYALONG PRIMARY SCHOOL**

Established 1878  
10-14 Bourke Street,  
Pyalong, Victoria, 3521

Phone: 03 57 851 291  
Mobile: 0438 851 291  
email: pyalong.ps@edumail.vic.gov.au  
www.pyalongps.vic.edu.au

Principal: Jessica Bowen-Duarte

Teachers: Stephen Cadusch—Foundation/1 Narelle Smith & Michelle Gyton-Taylor—Grade 2/3, Erica Stute – Grade 3/4, Jessica Ciampi—Grade 5/6, Margaret Dickinson, — Intervention, Michelle Gyton-Taylor—Indonesian

**IMPORTANT REMINDERS**

**Fri 12th June**—Student leaders will run a whole school assembly via Webex—for student only at this stage.

**Fri 26th June**—Last Day Term 2  
Finish at 2.30pm

**Mon 13th July**—First Day Term 3

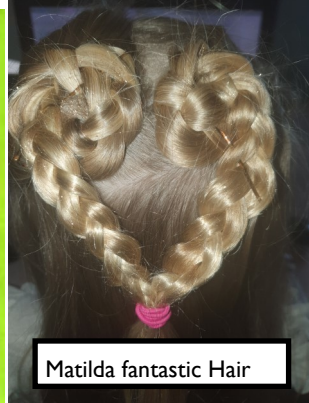
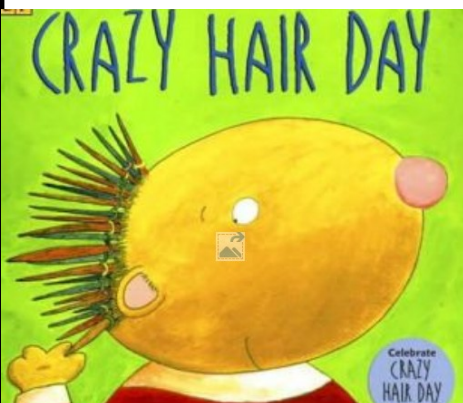
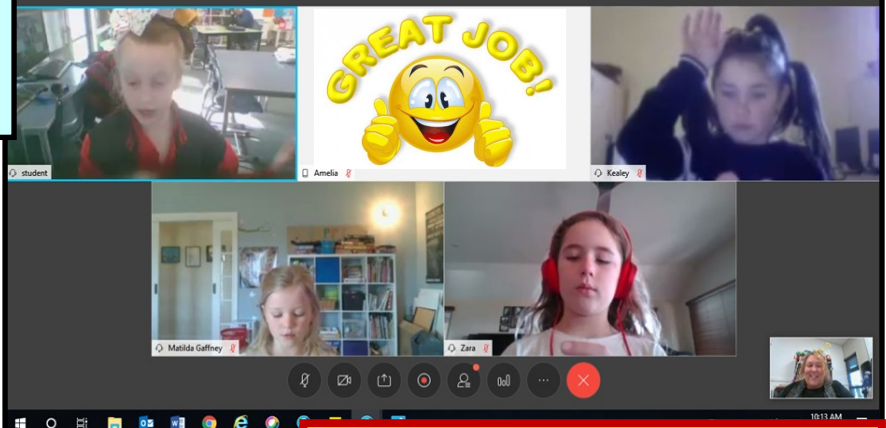
**CRAZY HAIR DAY**



**SCHOOL LAPTOPS**

Please return any school laptops that your family/child has borrowed for remote learning to the office.

**NO LUNCH ORDERS  
DUE TO THE CURRENT  
COVID-19 SITUATION  
NO LUNCH ORDERS UNTIL  
FURTHER NOTICE .**



**TISSUES PLEASE**  
*Donations of Tissues required*  
**If each family could please donate a box of tissues for the classrooms, it would be greatly appreciated.**

## Pyalong Primary School—return to onsite learning

### **HEALTH AND HYGIENE—key points include:**

- Regular hand washing supervised and encouraged by staff
- Sanitizer stations in each classroom
- Bubble taps will be turned off—**Students must bring a water bottle from home.**
- Increased cleaning schedule including spot cleaning throughout the school day and thorough cleaning of the playground and equipment.

Further information can be found in our Pyalong Primary School Covid-19 Policy located under policies on the school website.

### **PIE WARMER**

Although the Pie Warmer will still be available we would like students to bring a normal non pie warmer meal for lunch when possible.

### **ITEMS FROM HOME / BIRTHDAY CAKES / DRINK BOTTLES**

Students are currently not able to bring items from home, this includes show and tell. Birthday cakes and other shared food items cannot be brought to school. **Students need to bring individual drink bottles each day.** They are not permitted to drink from the bubbler taps which have been labelled 'not in use'. Plastic cups will be available for those that forget.

### **ASSEMBLIES**

Assemblies will not run until further notice. Our student leaders will run a whole school assembly via Webex beginning on Friday, June 12th at 2.40pm.

### **KITCHEN**

No programs or students will be allowed in the kitchen until further notice.

### **ON-SITE**

Restrictions on access to the school site for anyone other than immediate school staff and students.

### **ILL / UNWELL**

If your child is ill or is feeling unwell, they must not attend school. They must remain home and seek medical advice.

### **ADJUSTED ARRANGEMENTS FOR DROP OFF AND PICK UP**

**Drop off 8.45-9am** To support students as they enter the school each morning, staff will be located at the gates from 8.45am daily.

#### **Pick up**

At these times, students will be accompanied by a teacher to the gate and dismissed once the family vehicle has been identified. We ask that you please try to arrive at your scheduled time and remain in your vehicle when you arrive. Students can then be safely dismissed and the carpark can be vacated promptly for the next group.

Family Name A—G	3.15pm
Family Name G—McLeod	3.25pm
Family Name Moffatt—Z	3.35pm

Before and After  
School Care

Before and After School Care  
will operate as from  
7.00am—9.00am and 3.10pm to 6.00pm

**Booking please call,  
Pyalong Primary School 57851291 or  
BASC Co-ordinator. Tyler Agius 0402 610 031**

